



Love
MILL ROAD

Mill Road Lantern Trail



Mill Road will be sparkling this December as we introduce the spectacular Mill Road Lantern Trail. Supported by a new charity, Love Mill Road, the Mill Road Lantern Trail celebrates the special identity and culture of Cambridge's most vibrant neighbourhood.

Ten community lanterns, representing ten local roads, will be hosted by ten of Mill Road's independent shops. They will glow from 5th December, which would have been the date of the Mill Road Winter Fair, and may form the core of future community parades at the Fair. We hope these lanterns are the first of many and that other roads and organisations in the Mill Road neighbourhood will participate in future years.

Created by illustrator, Penny Sobr, each lantern reflects the words and images contributed by local residents to describe the special identity of their road, as well as the character of the shop that is hosting their lantern.

Love Mill Road is a new charity designed to nurture Mill Road's independence and diversity, and its reputation as a welcoming, caring community. As a charity (which can benefit from Gift Aid), it will channel sponsorship and donations to Mill Road community projects, including the non-commercial aspects of the Mill Road Winter Fair. With the help of local donations, we hope to keep the Fair community-focused and financially sustainable long-term.

To find out more, and donate, visit www.lovemillroad.org.

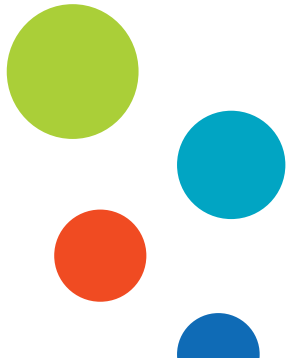


Mill Road Fair Online

Our very first Online Fair, which you can see at www.millroadwinterfair.org after 1st December, will reveal more about the Mill Road Lantern Trail and will cast a spotlight on many of the wonderful local performers, artists, stalls and organisations who would have been at the Mill Road Winter Fair on the day:



Listen to Mill Road Winter Fair performers on Spotify



Mill Road Lantern Trail – the stories, ideas and images behind the lanterns and more about Mill Road's buildings, history and culture

Our performers – the local musicians, mime artists, dancers and bands who bring the Fair to life each year

Mill Road artists – a fabulous gallery of artworks by local artists, with opportunities to purchase

Stalls – a selection of our regulars; local crafts and produce, made with care

... and a host of local partner contributions, from the Mill Road History Society to Mill Road TV, University of Cambridge Museums and more.

Completely organised and led by local volunteers, the Mill Road Winter Fair is a stunning achievement. Please join in and be part of the team that makes this amazing event happen each year. More information can be found at www.millroadwinterfair.org/help-us/



Thank you!

The Mill Road Lantern Trail is supported by Cambridge City Council and Anglia Ruskin University.



Mill Road Winter Fair sponsors



Bush Property
Sales and
Lettings



Al-Amin



Anglia Ruskin
University



Cambridge
Classics



Regalstar
Catering Ltd



St Andrews
Bureau



HUGHES HALL
UNIVERSITY OF CAMBRIDGE



TRINITY HALL
CAMBRIDGE

Mill Road Stories... follow the trail

Use the weblink next to each place to find its story at www.capturingcambridge.org/mill-road-area/mill-road/

Arjuna Wholefoods (12) – Cambridge's radical and much-loved worker's cooperative since 1970: the longest-lived in Britain. bit.ly/arjuna-wholefoods

Former Sally Ann's (44a) – Built in 1913, 'The Playhouse' was the first purpose-built cinema in Cambridge. Later, it became the city's first supermarket. bit.ly/sally-anns

Petersfield Pharmacy (56) – This is the likely site of Mill Road's original windmill; there may have been one here from the 13th century. bit.ly/petersfield-pharmacy

Mill Road Cemetery – Established after a bad cholera outbreak when the city's churchyards had become too small for the growing population. Browse stories of those buried here at www.millroadcemetery.org.uk

Damasbridge (68) – The former shops on this site include the Meadowsweet Dairy. bit.ly/damasbridge

Ditchburn Place – The oldest building in Mill Road. Once the dreaded workhouse, and then a maternity hospital, precursor of the Rosie. bit.ly/ditchburn-place

Scholars House (89) – The present building gives no clue that this was once The Kinema, familiarly known as The Fleapit, loved by many including Ludwig Wittgenstein. bit.ly/scholars-house

Railway Cottages (124-134) – Tucked almost beneath the bridge, this building is amongst the oldest on Mill Road. In 1941, the cottages were hit by bombs. bit.ly/railway-cottages

The Old Library – This handsome building was opened in 1897 as a lending library for Mill Road's growing population. Recently, it has become a Hindu temple and cultural centre. bit.ly/bharat-bhavan

Mill Road Bridge – A defining feature of Mill Road, the first road bridge was built in 1889. bit.ly/mill-road-bridge

The Earl of Beaconsfield – First listed as a beer house in 1822, the landlord in 1884, Joseph Turner Bailey, was certainly a 'Mill Road character'. bit.ly/earl-of-beaconsfield

Gregs Cycles (186) – This shop has belonged to a watchmaker, an undertaker and a bootmaker. bit.ly/gregs-cycles

The Old Chemist Shop Antique Centre (206) – There's a lot of history behind this small building. Where was Mr Norman's will found? What was special about Mr Palmer's funeral? bit.ly/old-chemist

Hilary's and Cut Price Carpets (175) – Stand back and you can see that these two shops were once one building. Three boys went on a crime spree here in 1889, and there was a surprise equine visitor in 1988. bit.ly/hilarys-wholesale

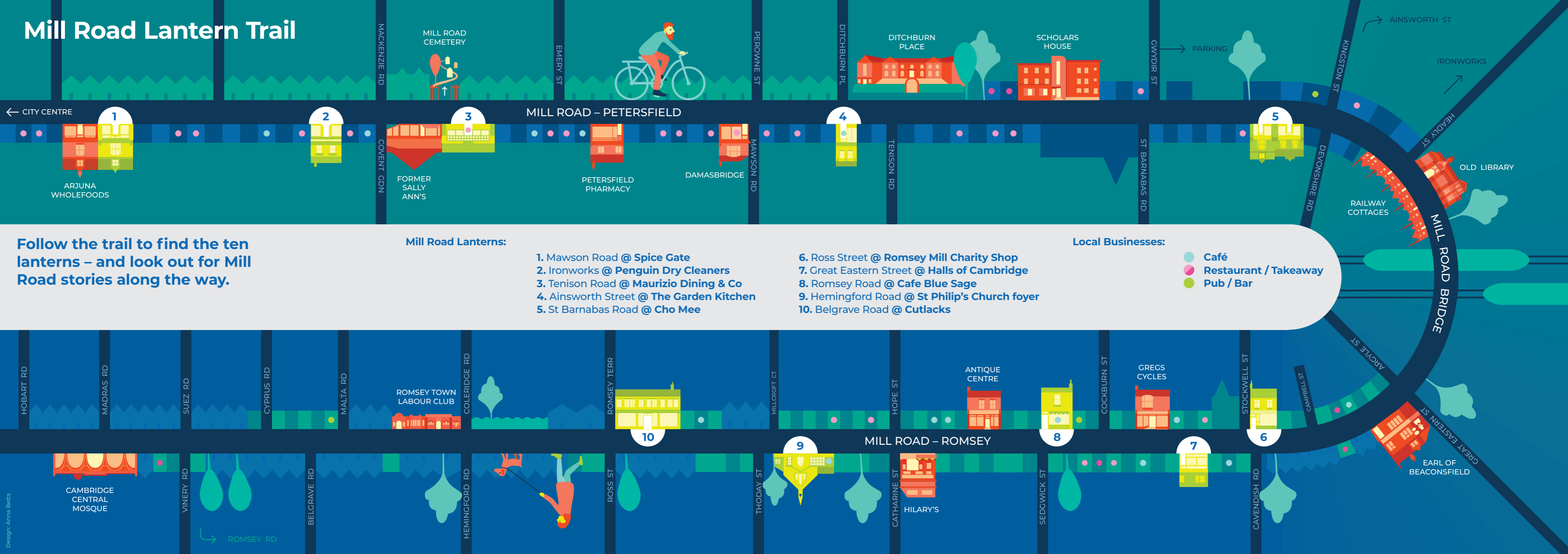
Romsey Town Labour Club – For many years, Romsey was known as Red Romsey because of its large population of unionised left-wing railway workers. The Labour Club was built by members and was the heart of the community. bit.ly/romsey-labour

Cambridge Central Mosque – The mosque, with its beautiful timber structure, was inspired by both Islamic and English architectural traditions. Its lovely garden and its timber trees throughout the building serve as an oasis of calm at this end of Mill Road. Cambridge Central Mosque is Europe's first eco-mosque and has a near-zero carbon footprint. www.cambridgecentralmosque.org



MILL ROAD
WINTER FAIR

Mill Road Lantern Trail



← CITY CENTRE

MILL ROAD CEMETERY

MILL ROAD – PETERSFIELD

DITCHBURN PLACE

SCHOLARS HOUSE

PARKING

AINSWORTH ST

IRONWORKS

OLD LIBRARY

RAILWAY COTTAGES

MILL ROAD BRIDGE

ARGYLE ST

EARL OF BEACONSFIELD

Follow the trail to find the ten lanterns – and look out for Mill Road stories along the way.

Mill Road Lanterns:

- 1. Mawson Road @ **Spice Gate**
- 2. Ironworks @ **Penguin Dry Cleaners**
- 3. Tenison Road @ **Maurizio Dining & Co**
- 4. Ainsworth Street @ **The Garden Kitchen**
- 5. St Barnabas Road @ **Cho Mee**

Local Businesses:

- Café
- Restaurant / Takeaway
- Pub / Bar

- 6. Ross Street @ **Romsey Mill Charity Shop**
- 7. Great Eastern Street @ **Halls of Cambridge**
- 8. Romsey Road @ **Cafe Blue Sage**
- 9. Hemingford Road @ **St Philip's Church foyer**
- 10. Belgrave Road @ **Cutlacks**

MILL ROAD – ROMSEY

10

9

8

7

6

CAMBRIDGE CENTRAL MOSQUE

ROMSEY RD

HILARY'S